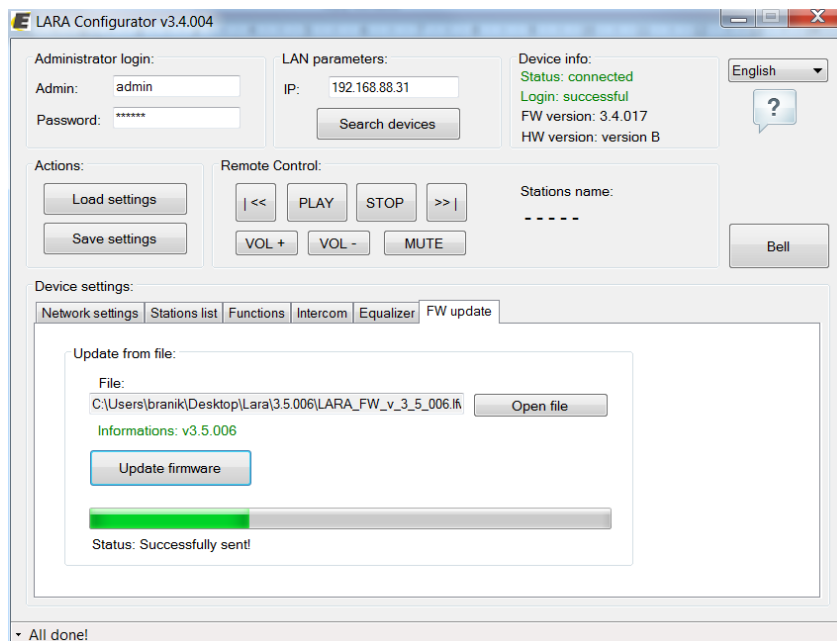
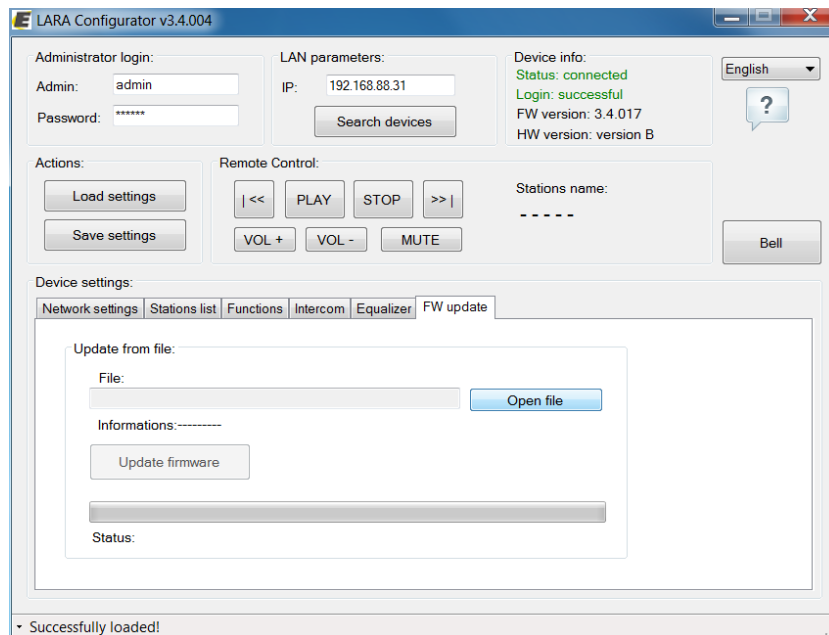


To update the LARA firmware (from website)

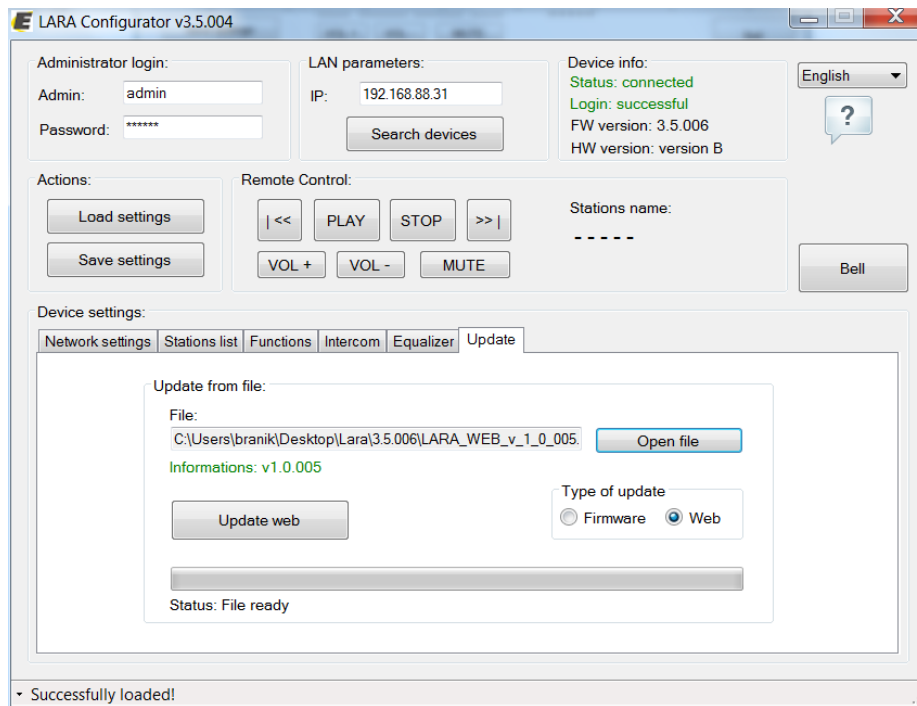
- 1) Open the appropriate Configurator - according to the current version of LARA FW and update the FW with the new version **3.5.006**



Note: The FW update retrieval bar (green bar) does not always function correctly and doesn't have to end – **Correct information is All done!** In the lower left corner - this indicates the correct FW upload

- 2) Open configurator v.3.5.004 and upload FW for web

On the last Update tab - you have to select the Web and click the Open file button to find the web FW, which then uploads with the Update web button.



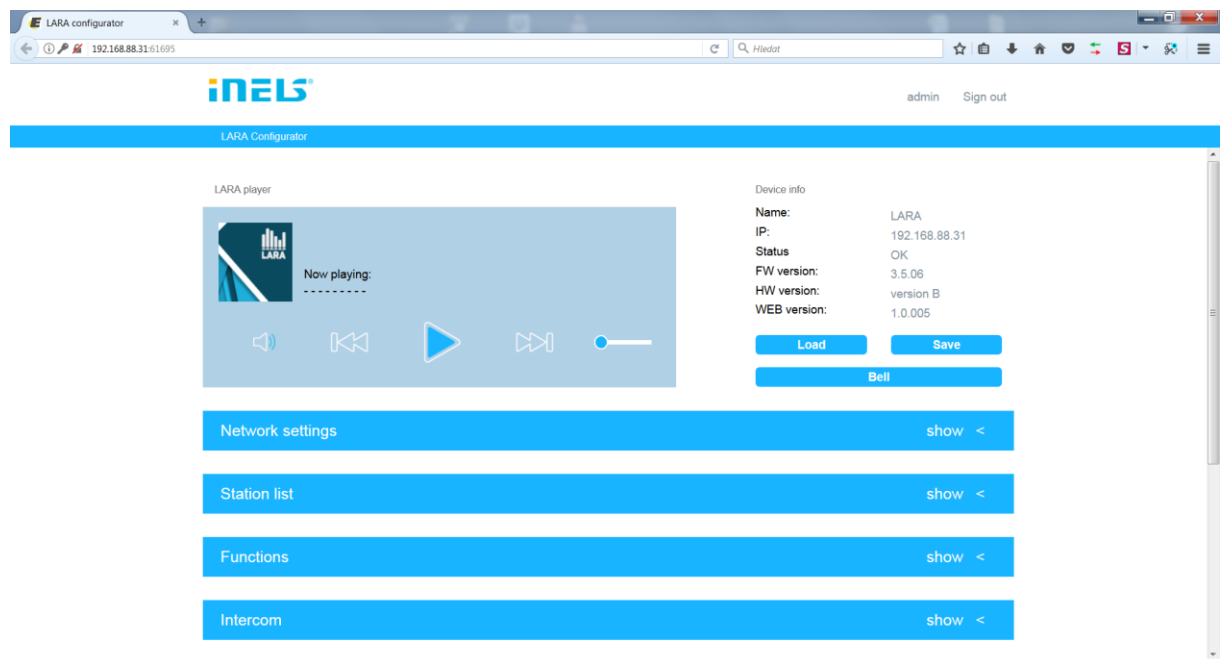
3) View your site

The LARA web interface is displayed in a web browser with a static / dynamic IP LARA and port **61695**

Ad.: 192.168.88.31:61695

Once the IP is entered, the web interface will require login information, which is by default:

Name: admin password: elkoep



Note: The web interface is identical to the configurator